



汉欧国际
Wuhan Asia-Europe Logistics



武汉每天不一样



汉欧——跨国国际物流多式联运的践行者

WAE——A Practitioner of International Multimodal Logistics

武汉汉欧国际物流有限公司
Wuhan Asia Europe Logistics Co., Ltd



www.wae-logistics.com





汉欧国际
Wuhan Asia-Europe Logistics



武汉每天不一样

目录 Contents

一、**汉欧简介与班列运行情况** About WAE

二、**汉欧的六大优势** WAE's Advantages

三、**跨国冷链物流的先行者**

International Cold Chain Transport Practice

四、**汉欧--武汉的城市名片** Social Impact

五、**汉欧未来发展规划** Future Plans



WAE简介与定位 About WAE

汉欧
WAE

武汉汉欧国际物流有限公司 (WAE) , 是武汉至欧亚非大陆国际铁路货运班列的运营商。
The operator of the rail freight transport between Wuhan and Europe.

武汉市人民政府向全社会提供的国际物流运输的公共服务平台
The public platform provided by Wuhan municipal government.

以武汉为端点、以中部城市群等经济腹地的客户需求为导向、提供跨亚欧非大陆国际物流服务的供应链管理公司
Based in Wuhan, we radiate across central China and Europe, offering tailored supply chain services for customers with high value-added products.

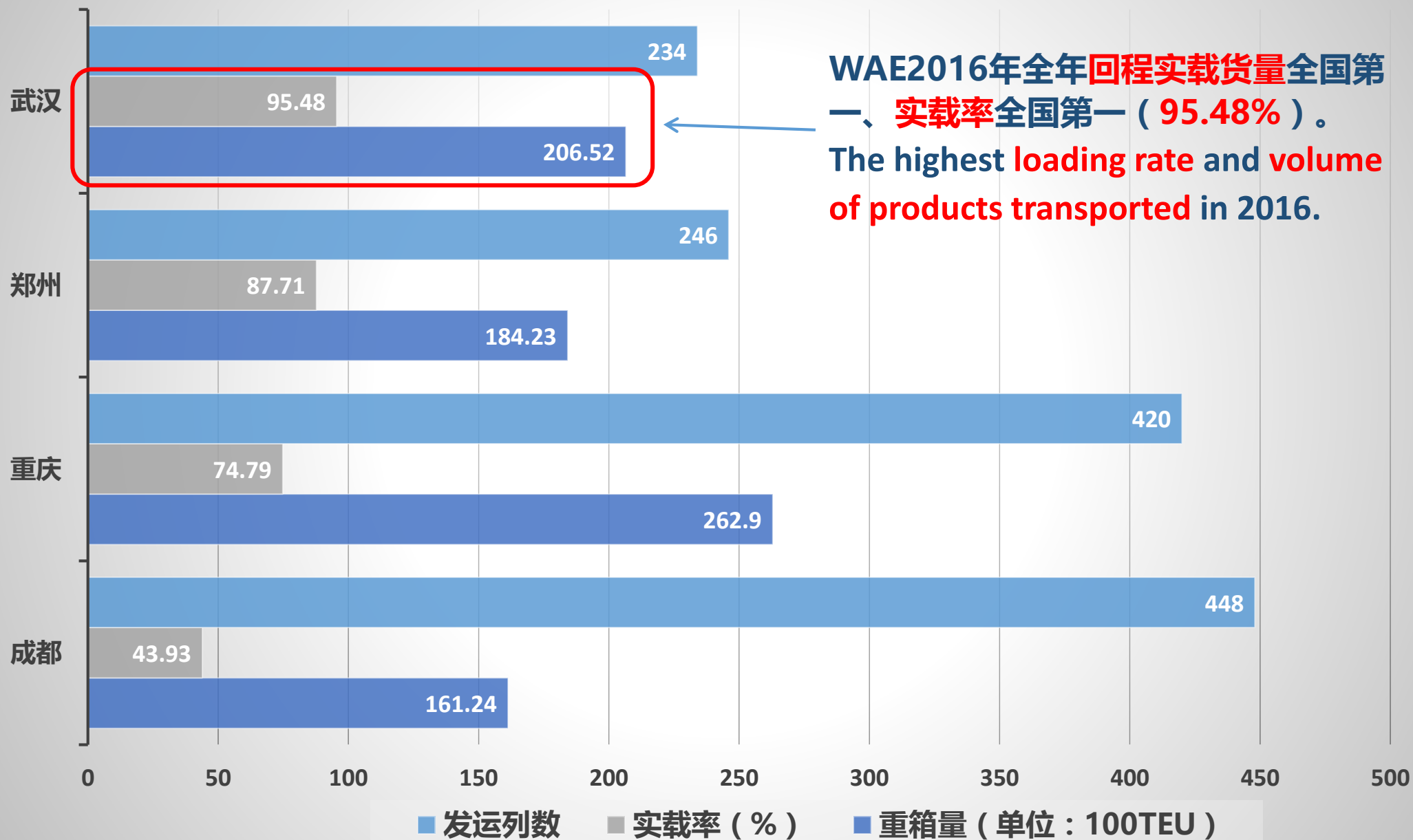
增加公共产品与公共服务供给
To increase the supply of public products and services

汉欧班列 “双龙出关” The Routes of WAE Trains



南线“汉新欧”，北线“汉满欧”串起横跨东西方的欧亚大陆，联通28个国家60余城市，构建了丝路经济带物流网络系统，向沿线国家提供高效便捷的物流服务。
 Southern line “Han Xin Ou”; Northern line “Han Man Ou” Connecting more than 60 cities of 28 countries.

汉欧班列2016年发运成绩 The Achievement of 2016



汉欧成绩 The LCL Qualifications

汉欧拼箱服务被列为国家中欧班列发展规划重点支持项目

The key project stated in the China Railway Development Plan



汉欧成为中国（湖北）国际贸易单一窗口首位注册用户

The 1st client of China Hubei International Trade Single Window

汉欧与阿里巴巴旗下外贸服务平台--一达通达成合作，共建多式联运大通道

The partner of building a multimodal channel --- Onetouch Co., of Alibaba Group





汉欧国际
Wuhan Asia-Europe Logistics



武汉每天不一样



目录 Contents

一、汉欧简介与班列运行情况 About WAE

二、汉欧的六大优势 WAE's Advantages

三、跨国冷链物流的先行者

International Cold Chain Transport Practice

四、汉欧--武汉的城市名片 Social Impact

五、汉欧未来发展规划 Future Plans



平台优势 The Platform



汉欧国际
Wuhan Asia-Europe Logistics

国际领先物流企业

Leading Logistics Company

共商、共建、共享

**“Achieving shared growth through
discussion and collaboration”**

www.wae-logistics.com

团队优势 The Talents

年轻化
Young



80后、90后
占84%；

84% are below
30s.

高素质
Highly Educated



63%本科、硕士、博士学位、30%
留学归国人员：

63% hold Doctor/Master
/Bachelor Degrees, 30% had oversea
educational experience

英国剑桥大学、华威大学、纽卡
斯尔大学、约克大学、卡迪夫大学；
俄罗斯圣彼得堡大学、法国巴黎高等
管理学院、里昂三大；加拿大拉瓦尔
大学、澳大利亚昆士兰大学等

多语言
Multilingual



精通英语、俄语、
德语、法语、日
语等多语种。

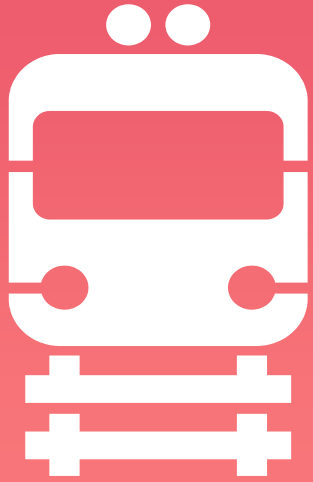
English, Russian,
German, French,
Japanese etc.

线路及布点优势 The Routes and Networks



汉欧班列线路定位以武汉至**制造强国**德国、法国，**资源大国**俄罗斯、白俄罗斯等国家的线路为主。Routes to countries with **strong industrial backgrounds** or **abundant resources**, such as Germany and Russia, are the main lines of WAE currently.

三大服务产品优势 The Products



1

定制班列
Dedicated Train

大型企业

Big Manufacturers

单次发运量不少于41个
40英尺集装箱的客户

At least 41 units 40ft
containers

中小型企业

Small/Medium Sized
Company

一个柜、数个
柜；
Volume of order
several containers

大企业的小订单

2

公共班列

Public

Regular Train

汉欧三大
服务产品

WAE Main
Services

3

双向拼箱

LCL

小微企业

Smaller Business

跨境电商，私人订制
一单、数单

E-commerce and
tailored service for
individuals

国际物流与国际贸易并进优势

The International Logistics and Commerce

提高汉欧国际大通道的社会关注度
Attract more public attention

推进在武汉建成“一带一路”进口产品交易中心。
Build a trading center of high quality food imported from countries along the B&R



白俄罗斯驻华大使馆指定用奶

Milk



白俄罗斯
萨乌斯金
好牛奶 好享受

汉欧
国贸



@武汉汉欧国际物流有限公司
weibo.com/hanouguoji

“一带一路”战略节点城市区位优势 The Geographical Advantage





汉欧国际
Wuhan Asia-Europe Logistics



武汉每天不一样

目录 Contents

一、汉欧简介与班列运行情况 About WAE

二、汉欧的六大优势 WAE's Advantages

三、跨国冷链物流的先行者

International Cold Chain Transport Practice

四、汉欧--武汉的城市名片 Social Impact

五、汉欧未来发展规划 Future Plans

REEFER CONTAINERS TECHNICAL DETAILS

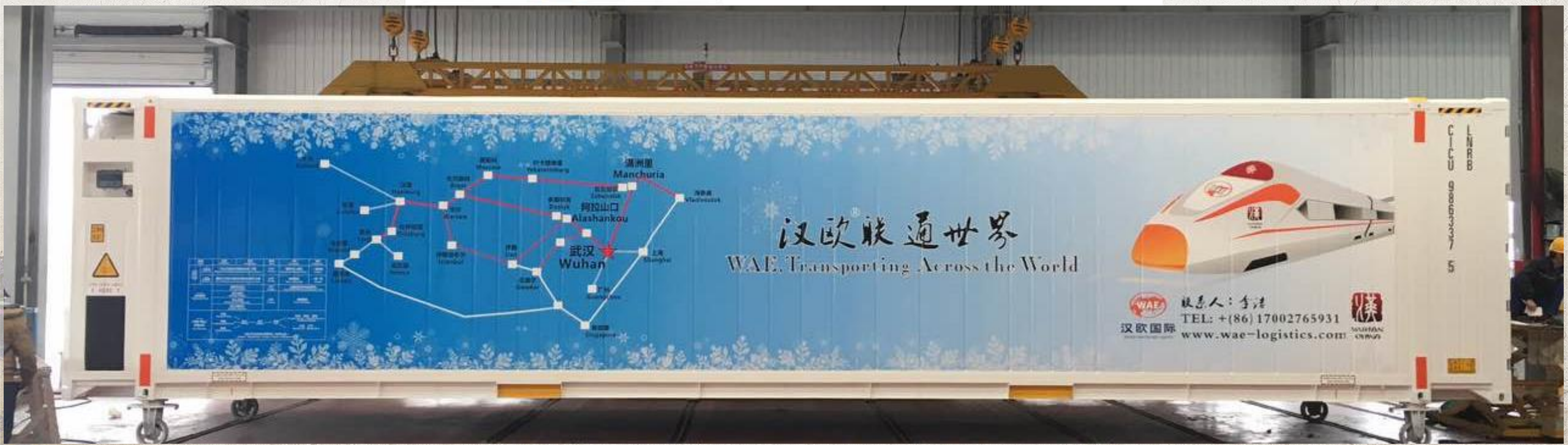
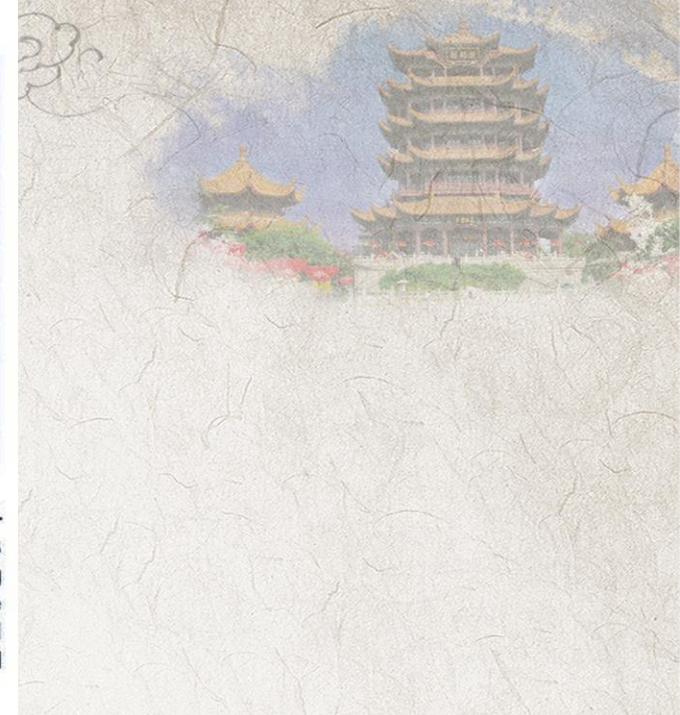
汉欧定制的国产 冷藏集装箱

WAE's reefer containers



Owner	«KTZ Express» JSC
Type of containers	45" HCRF
Tare weight	7 495 kg
Payload	27 000 kg
Internal volume	80 m ³
Temperature regime	From -20C° to +20C°
Fuel tank volume	800 liters
Average consumption	40 liters per day
Recommended voltage	380/440 V with frequency 50/60 Gz
Production year	2014

The reefer containers are equipped with **ThermoKing T-1200** diesel generator equipment, which allows to transport goods in an off-line mode during 20 days, as well as ThermoKing **TracKing** GPS system, which provides 24-hours monitoring of the containers dislocation and temperature inside the containers, and real-time control of the technical condition of the equipment and the fuel level.

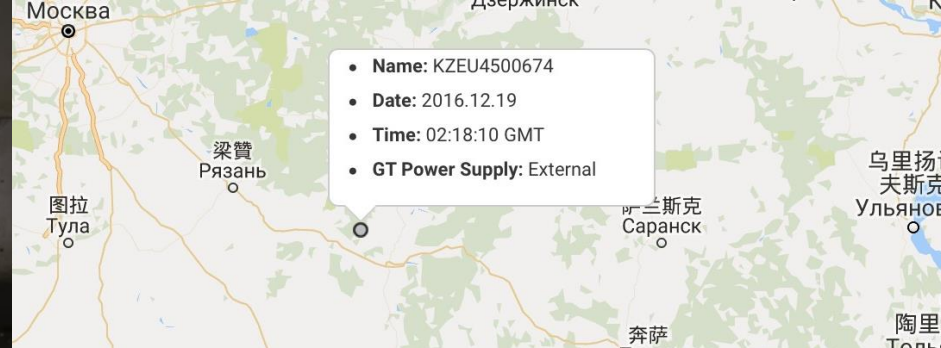




境外加油 Fill up the diesel fuel tank



温度湿度监控仪
temperature and humidity monitor



全球定位系统实时追踪
Track the container online

Timestamp	Temperature (°C)	Sens
2016.12.19 02:16:00 GMT	No Data	Ambient
2016.12.19 02:14:54 GMT	15.7	Internal



集装箱清洁
Cleaning



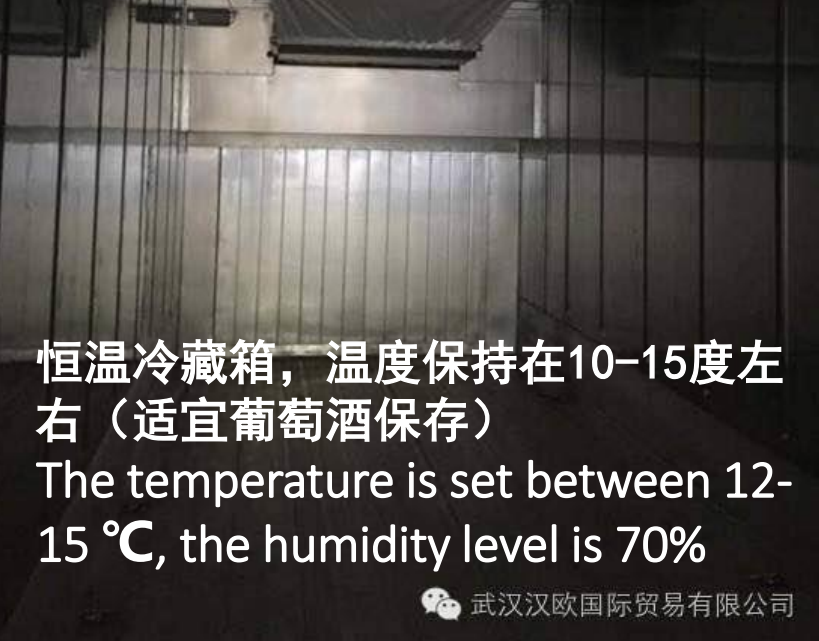
集装箱消毒
Sterilizing



集装箱烘干
Drying

葡萄酒运输流程 Wine Transport

自带油柜、发电机、冷冻机



恒温冷藏箱，温度保持在10-15度左右（适宜葡萄酒保存）

The temperature is set between 12-15 °C, the humidity level is 70%

武汉汉欧国际贸易有限公司



The container is equipped with diesel fuel tank, generator and refrigerator

武汉汉欧国际贸易有限公司



装箱中，布置防震安全气囊

Loading and filling inflatable cushions



武汉汉欧国际贸易有限公司



封箱

Locking the container and seal the lead

武汉汉欧国际贸易有限公司



铅封锁柜，中途绝不打开

The lead sealing

武汉汉欧国际



集卡准备完毕，准备运往铁路场站
The truck is ready



专业电剪刀剪铅封

武汉汉欧国际贸易有限公司



开箱，防震气囊尽忠职守，确保葡萄酒的安全

Inflatable cushions protected wines during the shipment.

武汉汉欧国际贸易有限公司



Trays stayed where they were

托盘毫无移动，完全看不出长途跋涉的颠簸



卸货清点完毕，从法国到武汉“零耗损”运输

Zero wastage from France to Wuhan

武汉汉欧国际贸易有限公司



汉欧国际
Wuhan Asia-Europe Logistics



武汉每天不一样

目录 Contents

一、汉欧简介与班列运行情况 About WAE

二、汉欧的六大优势 WAE's Advantages

三、跨国冷链物流的先行者

International Cold Chain Transport Practice

四、汉欧--武汉的城市名片 **Social Impact**

五、汉欧未来发展规划 Future Plans

汉欧-- 武汉市的城市名片

WAE--- Wuhan's
International
Business Card



武汉号
城际客车

“Wuhan China”
Passenger Train in
Germany

汉欧班列里昂 接车仪式

Receiving
Ceremony of
the 1st
Wuhan-Lyon
Train



武汉汉欧国际物流有限公司

汉欧德国公司 揭牌仪式

Opening
Ceremony
of WAE
GmbH



2017年2月23日，**法国总理**
卡泽纳夫出席汉欧班列“**里昂-武汉**”接车仪式



On 23 Feb. 2017 , the **Prime Minister of France**, Mr. Cazeneuve attended the receiving ceremony of Lyon-Wuhan train, accompanied by Mr. Wang, WAE's chairman of the board.





白俄罗斯驻华大使亲临汉欧国贸王家巷体验店
The Ambassador of Belarus visited WAE's shop of imported products in Wuhan.

荷兰海尔德兰省代表团来汉欧取经，讨论在阿纳姆建设分拨中心。

A delegation of the Provincie Gelderland of the Netherlands visited WAE's HQ in Wuhan.



产业集群 Industrial Clusters



木材
Timber

奶粉、
婴幼儿
食品

Baby
Food



汽车
Automobile

电脑配件
Computer
Accessories



服装
Clothes



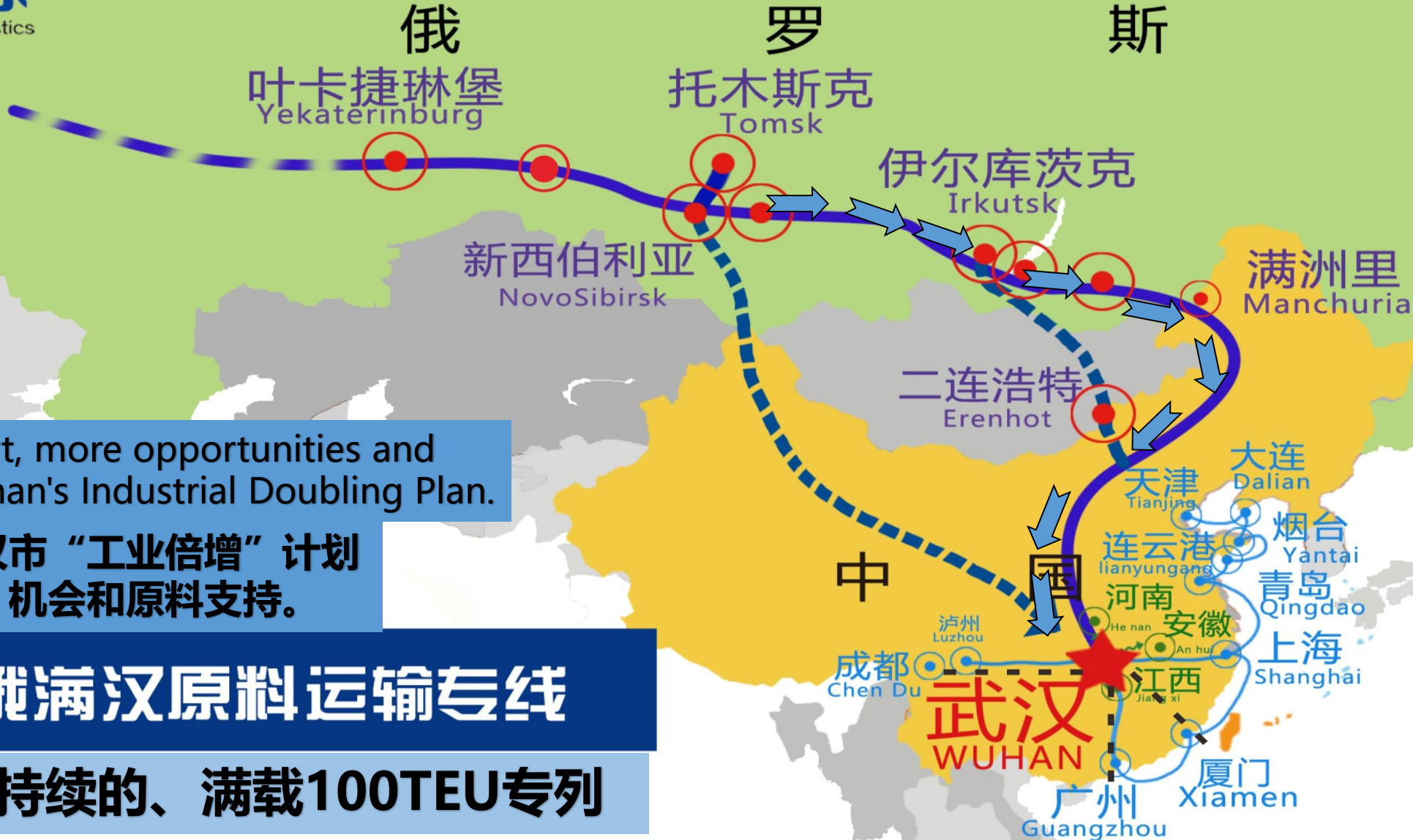
机械设备
Mechanical
Equipments





汉欧国际
Wuhan Asia-Europe Logistics

“俄满汉” 原料运输专列
RMW Dedicated Train



Material support, more opportunities and choices for Wuhan's Industrial Doubling Plan.

为湖北省、武汉市“工业倍增”计划提供更多选择、机会和原料支持。

北欧 + 俄满汉原料运输专线

全国首个、持续的、满载100TEU专列

“俄满汉” 专列运营情况与效应

The Achievement and Impact of the RMW Trains



1

2016年1-12月“俄满汉”原料运输专列共发运68列，计6548TEU，同比增长78.13%。

In 2016, RMW train has sent 68 trains, 6548TEU.

2

50%由湖北省本省企业吸收，50%经水路、公路、铁路分拨到北方、南方沿海及内陆城市。

50% of the volume has been absorbed by the local market in Hubei, the rest has been redistributed via the waterway to other area.

3

带动产业链的延伸和拓展，使武汉成为华中地区进口木材的集散、分拨、加工基地，形成一级木材交易市场和国家战略物资储备基地。

Extending the supply chain for local manufacturers.

Building industrial clusters, class-I wood trading market and national strategic reserve base.



汉欧国际
Wuhan Asia-Europe Logistics



武汉每天不一样

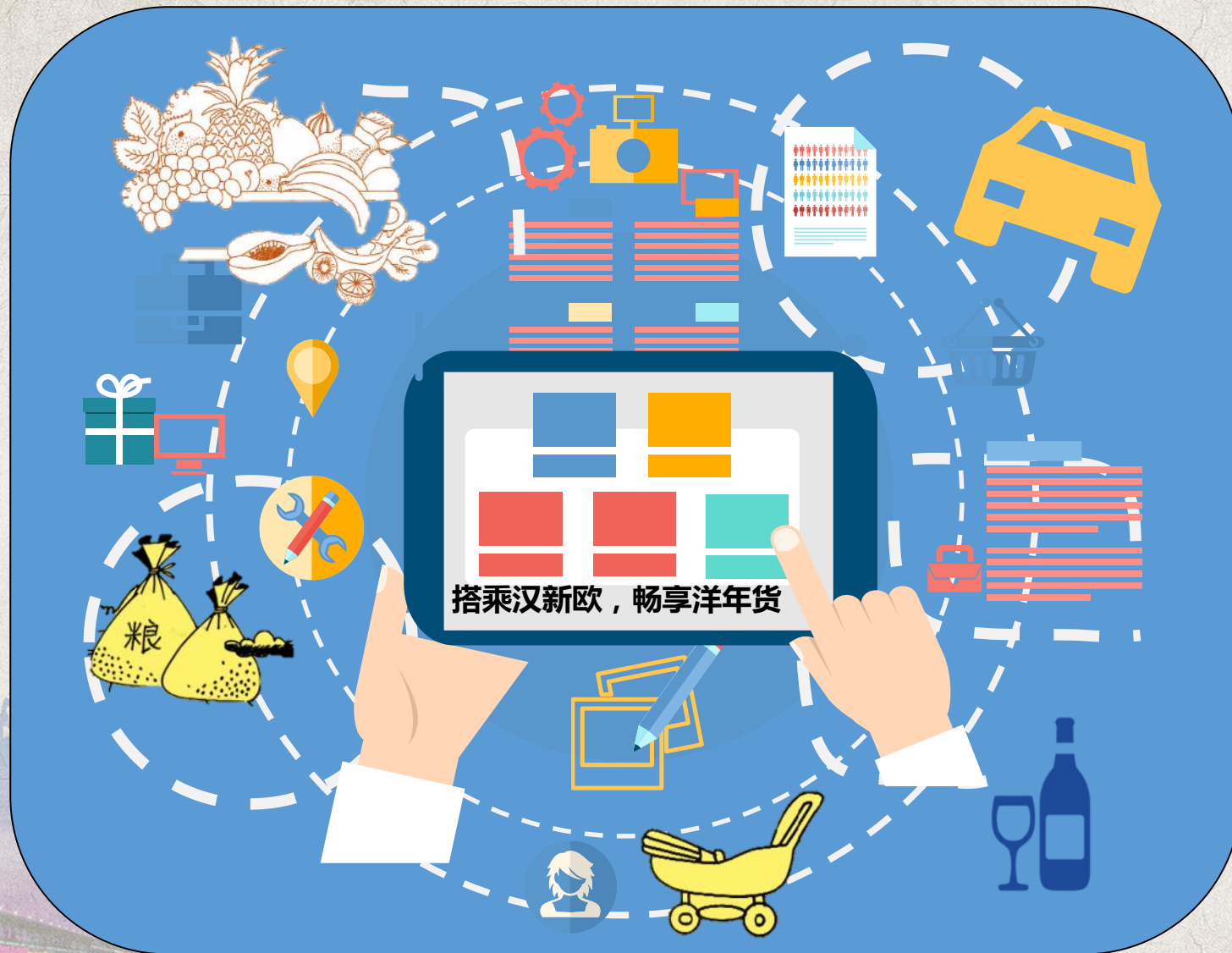
目录 Contents

- 一、汉欧简介与班列运行情况 About WAE
- 二、汉欧的六大优势 WAE's Advantages
- 三、跨国冷链物流的先行者
International Cold Chain Transport Practice
- 四、汉欧--武汉的城市名片 Social Impact
- 五、汉欧未来发展规划 **Future Plans**

贸易 Trade

航空让食品全球化
汉欧让食品普及化

WAE--making
imported food
universal



定位：快消品

- | | |
|-------|---------------|
| 葡萄酒 | Wine |
| 啤酒 | Beer |
| 牛奶 | Milk |
| 食用油 | Oil |
| 面粉 | Flour |
| 蜂蜜 | Honey |
| 母婴用品 | Baby products |
| 厨具 | Kitchenware |
| | Etc... |

线路拓展 Routes Development



Logistic Park Construction



物流园区支持汉欧班列发展

武汉——航空大都市 Wuhan---Aerotropolis



武汉拥有得天独厚的“铁水公空”多式联运优势，汉欧供应链公司在抓好跨国铁路运营时，计划发展航空货运代理，实现“从0到1”的突破。

Having the advantage of multimodal transport in Wuhan, WAE is preparing to start air-freight forwarding business, so to achieve a breakthrough from 0 to 1.

汉欧国际旅游 WAE Travel



世界那么大，跟着汉欧去看看！

Explore the world with WAE!



THANKS

TEL: 027-8332 2201

